



Passage Planning

A guide to the planning of a coastal passage

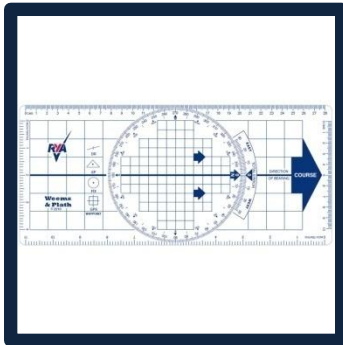
Introduction

This presentation takes you through the key areas to be considered when planning a passage

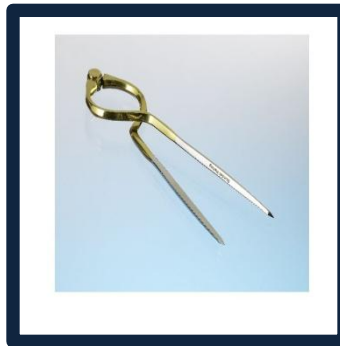


You Will Need

RYA Chartplotter



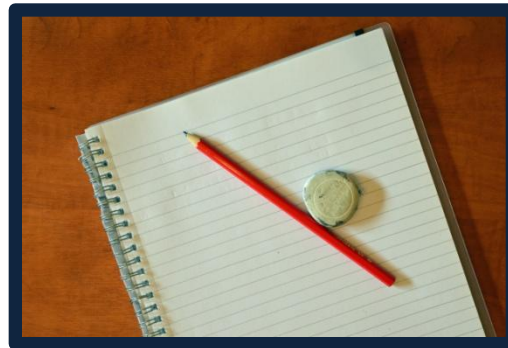
Dividers



RYA Practice Chart 3



Pad of paper, pencil and rubber



Question

Prepare a passage plan for a voyage from Hamilton to Dawson Harbour on Sunday 15th September for a 10m yacht, draught 1.8m, boat speed 6.0 knots. Weather forecast : Wind W F4-5, visibility good to moderate, occasional showers.

The plan should include :

- **Distance, departure time and ETA at destination**
- **Tidal gates and hazards on route**

During the passage which of the following options will provide viable safe refuges should the need arise, give reasons :

- **Returning to Hamilton**
- **Anchoring behind (east of) Dymond Reef**
- **Diverting to Sweetwater bay**
- **Anchoring in Jackson Bay**
- **Diverting to Sandquay**

Before Doing Anything

Ask yourself this question :

**Are the capabilities of the crew and
the yacht suitable to complete this
passage?**

If the answer is yes, then carry on.....

Study Chart & Pilot Books

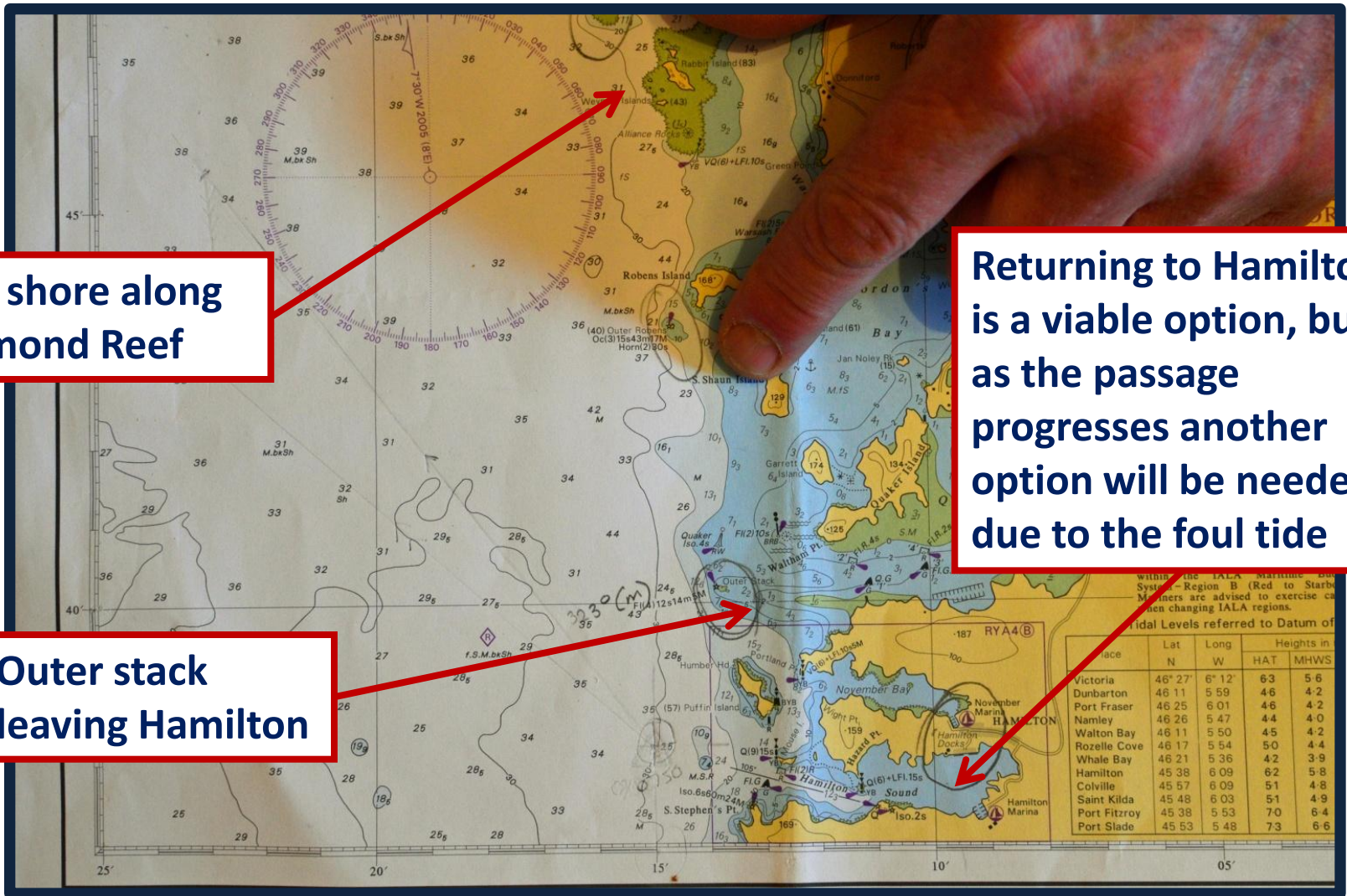
First.....

Look at a possible route

Look and find any navigational hazards

Look at the suitability of bolt holes

Hazards & Boltholes



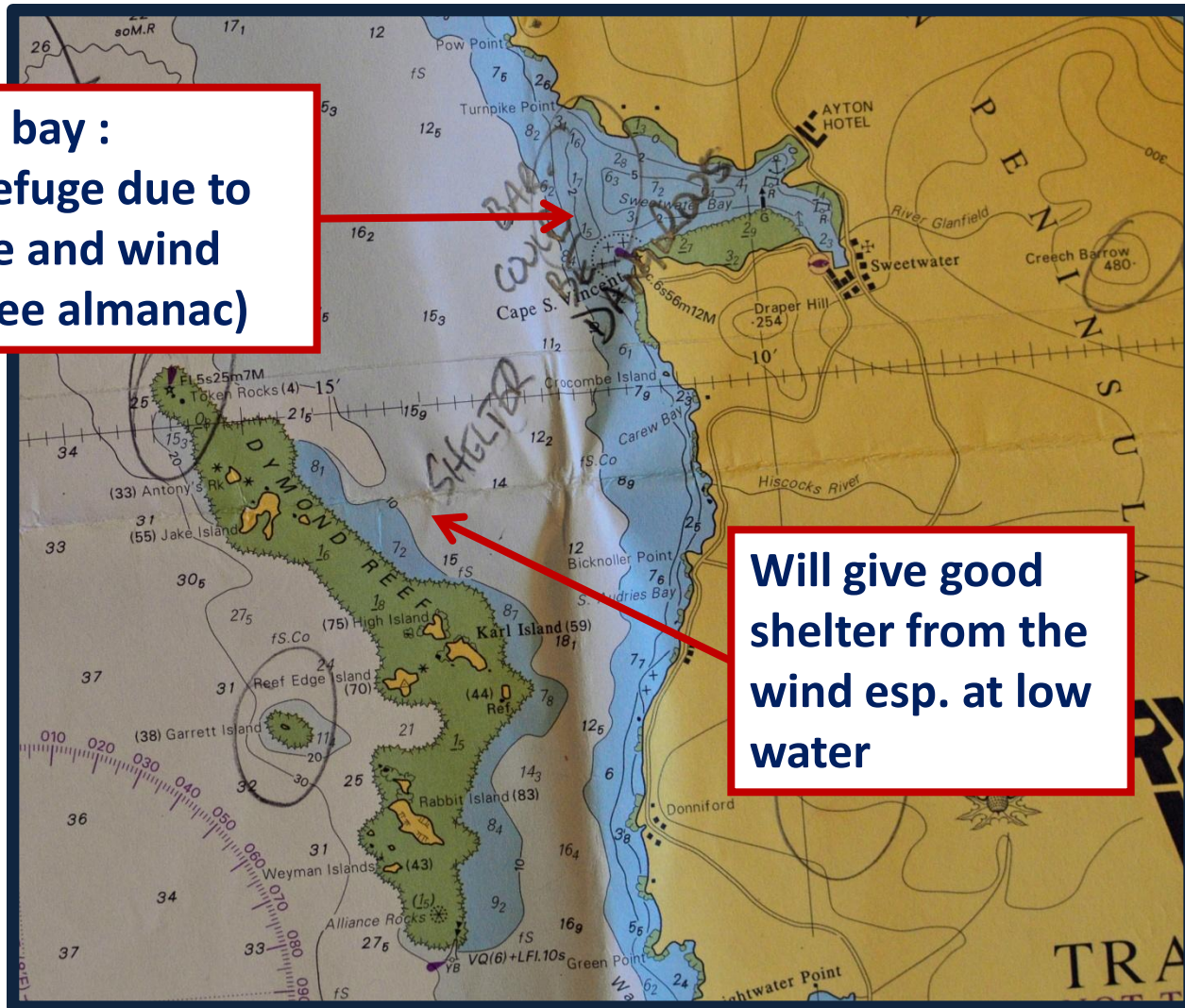
Lee shore along Dymond Reef

Returning to Hamilton is a viable option, but as the passage progresses another option will be needed due to the foul tide

Outer stack leaving Hamilton

Hazards & Boltholes

Sweetwater bay :
Not a safe refuge due to
bar entrance and wind
direction (see almanac)



Will give good
shelter from the
wind esp. at low
water

Hazards & Boltholes

Steven's Race is an important tidal gate for this passage, esp. as the wind may freshen around the headland. Tidal Atlas shows HW Victoria – 4 is best time to navigate it.

Magnetic anomaly

As Colville is a busy commercial port expect heavy shipping near it's approaches

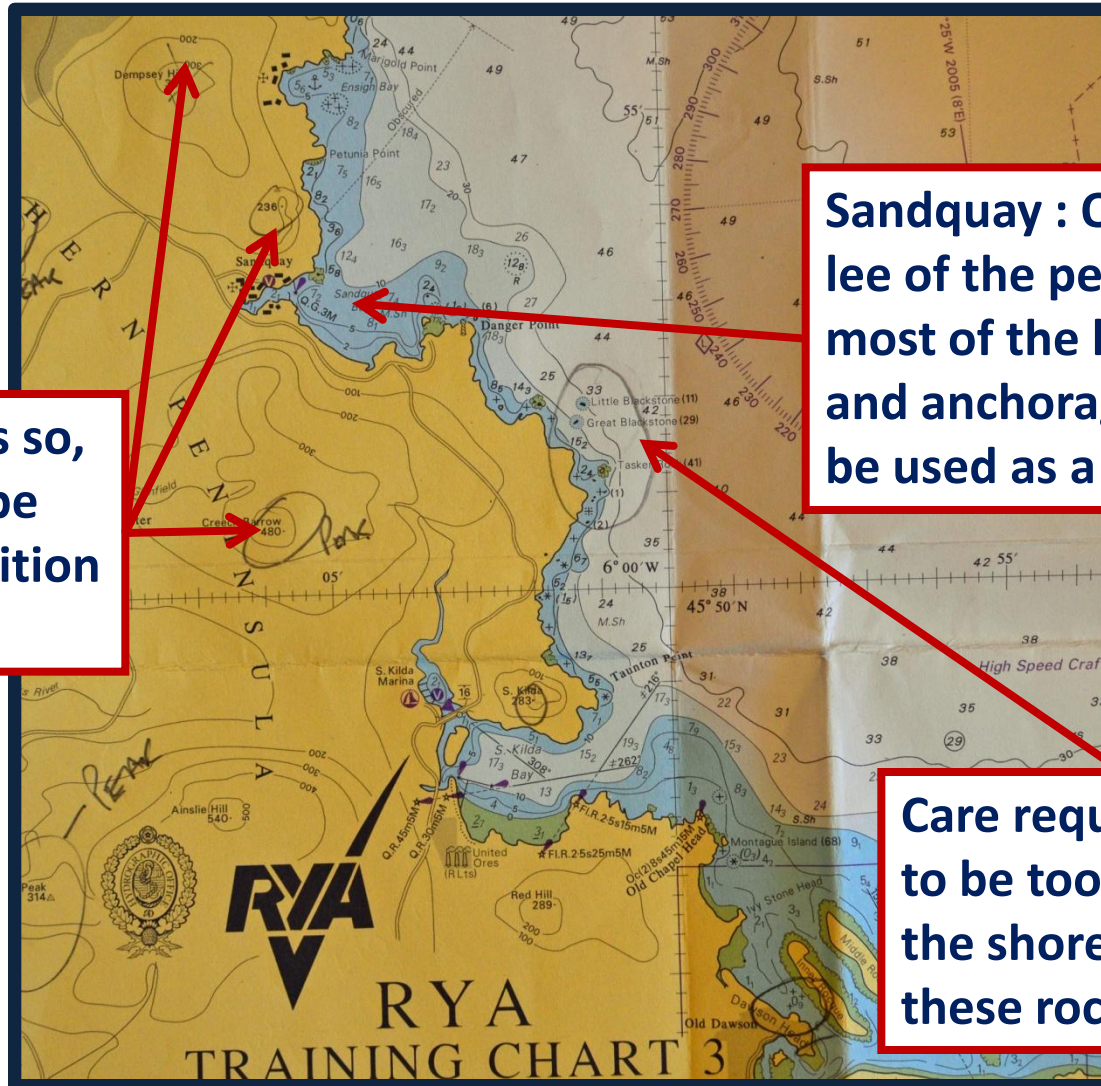
Hazards & Boltholes

Jackson Bay :
Completely open
to west so not a
good refuge

Don't get too close to
shore as many off-lying
dangers

Seas should be calmer
on this side of the
peninsula

Hazards & Boltholes



Lots of peaks so, if clear, will be good for position fixing

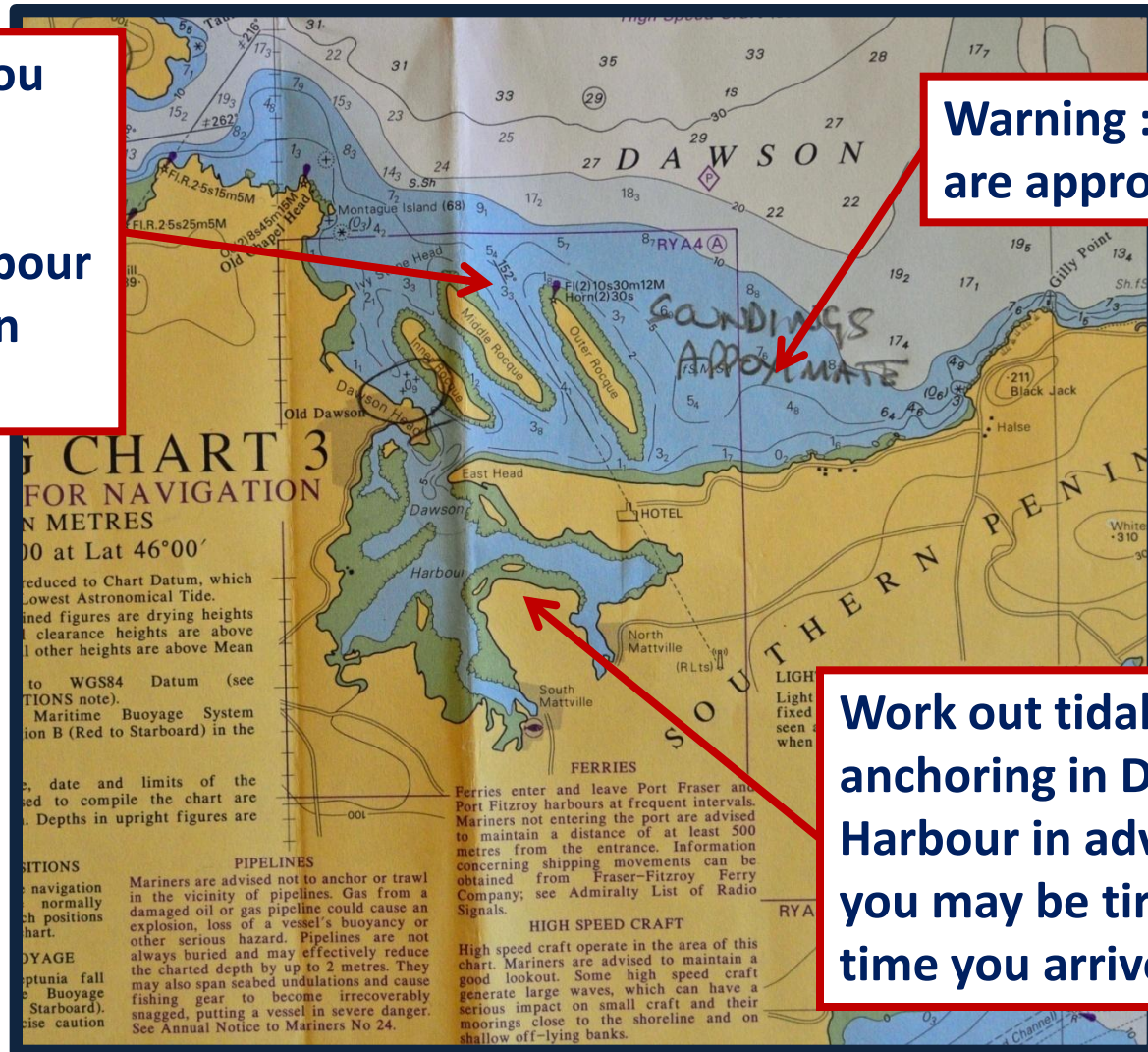
Sandquay : Once in the lee of the peninsula most of the harbours and anchorages could be used as a refuge

Care required not to be too close to the shore to avoid these rocks

Hazards & Boltholes

Make sure you have your approach to Dawson Harbour written down ready

Warning : Soundings are approximate



Work out tidal heights for anchoring in Dawson Harbour in advance as you may be tired by the time you arrive

Plotting the Route

Now you have researched the parameters of the route you can now plot it on the chart and measure the distance and approximate passage time based on your yacht speed.

In this case it is 52M and will take 7-9 hours depending on tide and wind conditions.

Studying the Almanac

The next job is to study the almanac so you can work out tidal times and streams which will tell you when you need to leave and your expected ETA

You need to be passing through Stevens Race at -4 HW Victoria. This means you need to leave at 10.30 SP DST and you should (if all goes to plan) arrive at 18.30 SP DST.

Planning the Passage

Now you have all the facts to make your passage plan. It should include:

- **Safe refuges**
- **Lights / marks and visual navigation aids you can use**
- **Departure plan**
- **Arrival plan**

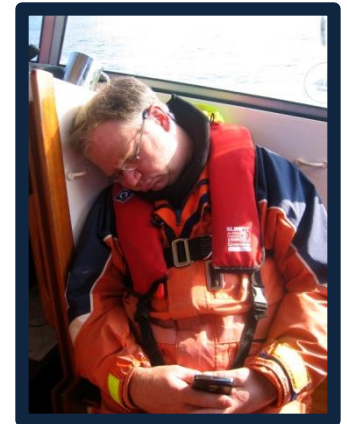
Before finalising it, you may find it helpful to go through it with you partner / crew

Other Considerations

It is quite a long day passage so thought must be given to :



- Crew victualling & comfort
- Crew responsibilities and rest periods
- Sufficient fuel and water



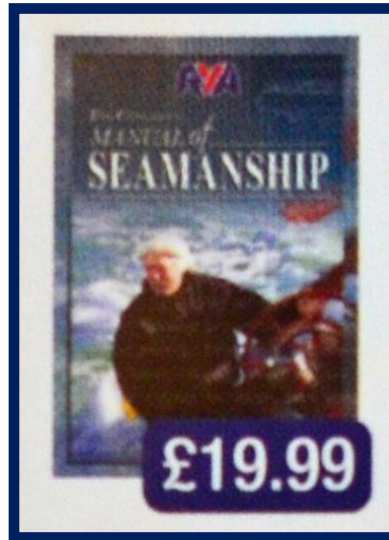
Finally, before setting off remember to contact the coastguard and your land contacts, etc

This website helps support us and our families.
If you found this document useful please consider donating £3.50 to
the running of this website.

[CLICK HERE TO DONATE](#)

Thank you for your honesty.

Further Reading



We highly recommend Tom Cunliffe's
RYA Seamanship Handbook (G36)

You can buy a copy of this book by visiting our on-line shop

www.penguinsailing.com

