



Passage Planning

The Basics

Introduction

This presentation takes you through the key areas to be considered when planning a passage



Considerations



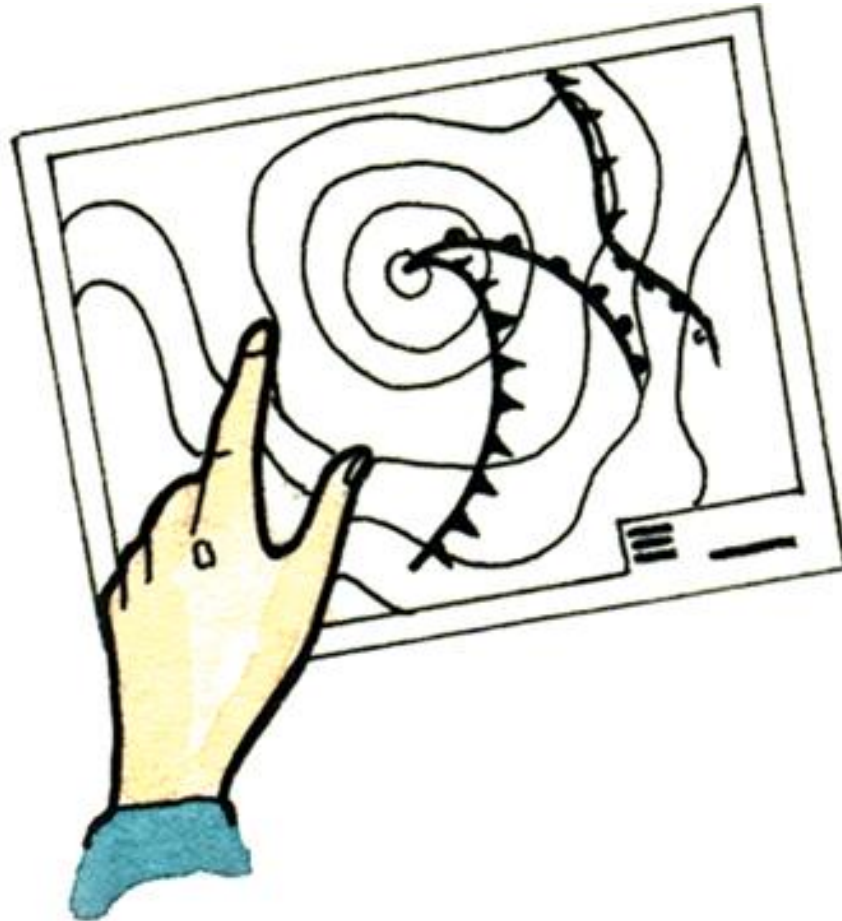
Distance and time...

...how far is it?

...what time do we need to arrive?

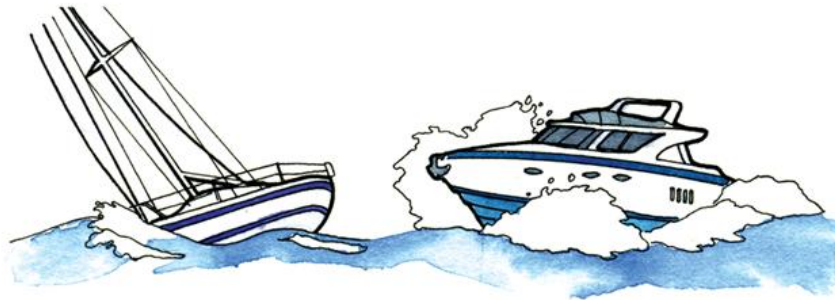
Considerations

What's the weather forecast?



Considerations

How long will the passage take...



...progress upwind can be slow and uncomfortable

...down wind you can steer a more direct course and make good progress



Considerations

Tidal gates...



...the fastest passage in a sailing boat is with a favourable tide

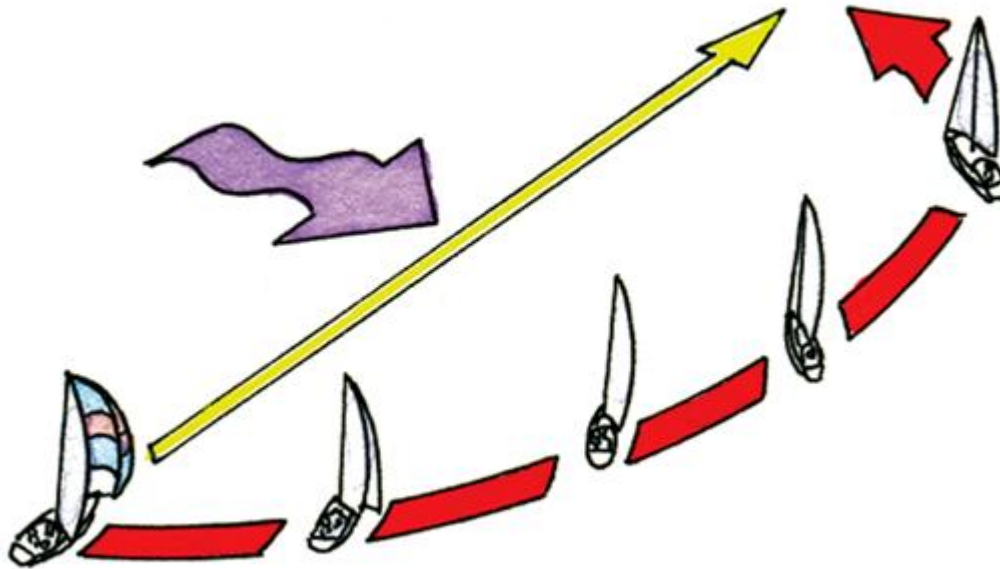
...this could mean rougher water if the wind is against the tide

...motor yachts are faster in a flat sea

...even if this means a passage against the tide

Considerations

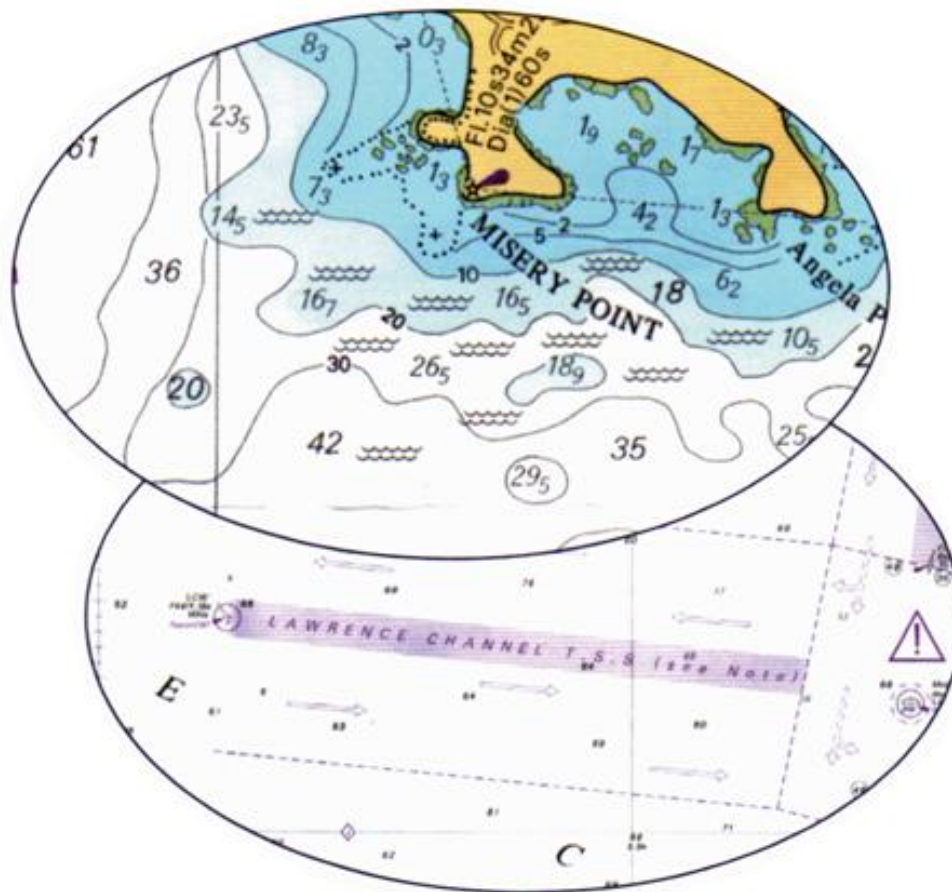
Course to steer...



...what allowances must be made for tide?

Considerations

What hazards will be encountered on route?



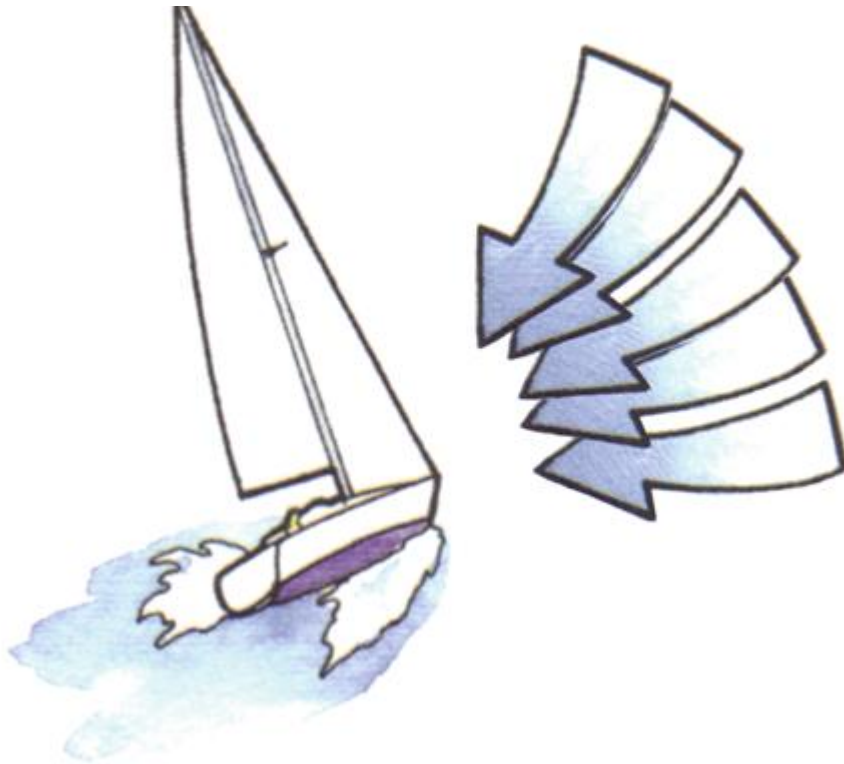
Considerations

Prepare pilotage plans for departure and entry



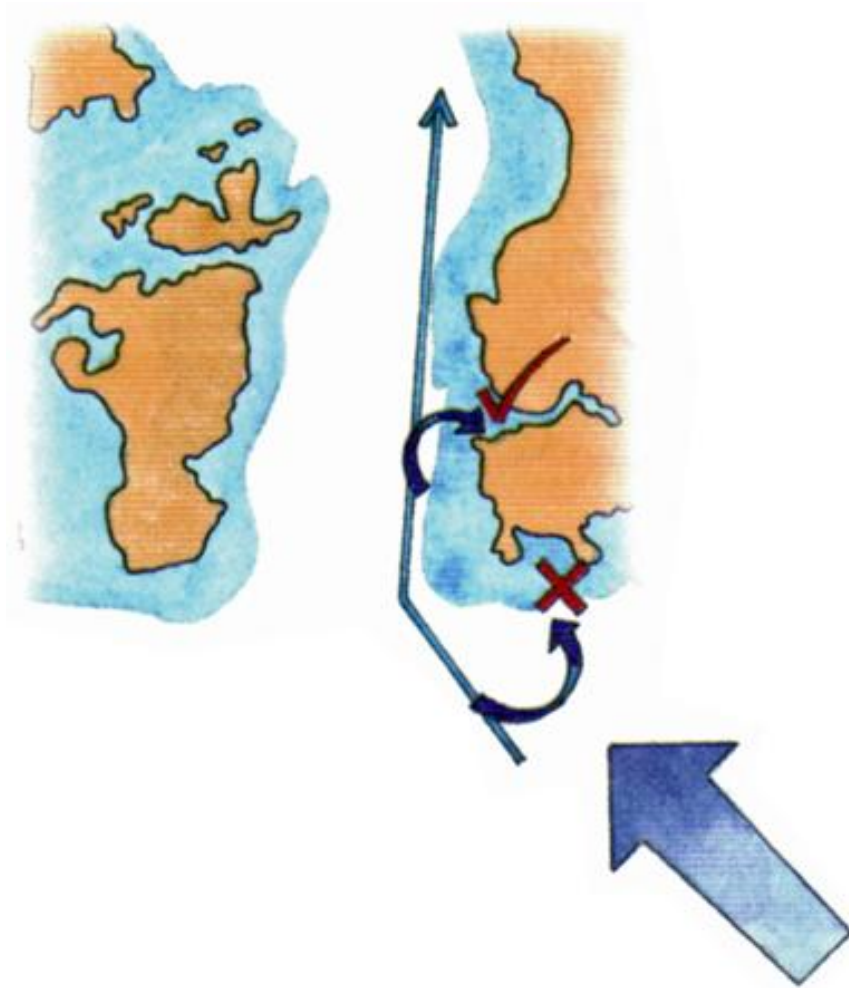
Considerations

Will you be able to maintain your course with any changes in wind direction?



Considerations

Determine suitable places of refuge



Considerations

Do you have enough fuel?



Considerations

As skipper, when do you need to be on deck?

Arrange watch systems around crew strengths...



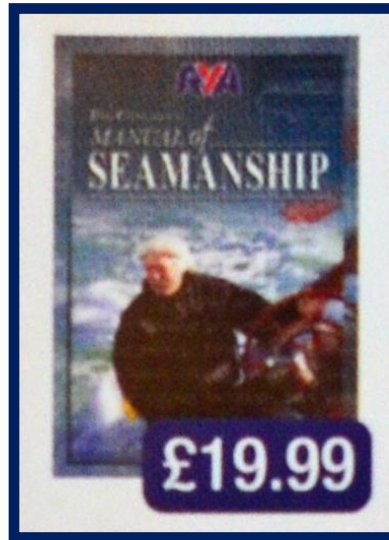
Is the passage within the limits of you, your crew and your boat?

This website helps support us and our families.
If you found this document useful please consider donating £3.50 to
the running of this website.

[CLICK HERE TO DONATE](#)

Thank you for your honesty.

Further Reading



We highly recommend Tom Cunliffe's
RYA Seamanship Handbook (G36)

You can buy a copy of this book by visiting our on-line shop

www.penguinsailing.com

